



**TRUCK BODIES**

A Marmon Holdings / Berkshire Hathaway Company



**CRANE REINFORCED BODIES**

## CHALLENGER PRO

2KLB TO 4KLB CRANE REINFORCED BODIES  
BODY SPECIFICATIONS

### Standard Construction

- Bulkhead (non-ribbed)..... 14 ga. galvanized steel
- Crossmember-front.....7 ga. hot-rolled formed channels
- Crossmember-intermediate.....SRW: 12 ga. galvanized steel  
DRW: 10 ga. galvanized steel
- Crossmember-reinforced intermediate...3"x3" 3/16 Structural Tube
- Crossmember-reinforced rear.....3"x5" 3/16 Structural Tube
- Compartment Bottoms ..... 16 ga. galvanized steel
- Compartment Tops ..... 14 ga. galvanized steel (one-piece integral w/loadspace centers)
- Rear Curb Compartment Top ..... 1/2" steel plate with 6" standard center hole
- Doors ..... 18 ga. galvanized steel double panel
- End panels-front ..... 14 ga. galvanized steel
- End panels-rear ..... 14 ga. galvanized steel
- Fender panels ..... 16 ga. galvanized steel
- Floor..... 12 ga. embossed galvanized treadplate
- Loadspace inside centers ..... 14 ga. galvanized steel (one-piece integral w/compartment tops)
- Intermediate panels ..... 16 ga. galvanized steel
- Longitudinals..... 10 ga. galvanized formed
- Shelving ..... 16 ga. high-spangle galvanized (250 lb. static load cap.)
- Tailgate..... 16 ga. galvanized (double panel, formed construction)

**STAHLL TRUCK BODIES** are engineered with an innovative lock-bolt fastener design to provide unbeatable durability and eliminate rust issues from traditional welding and grinding. Floor understructures are rigidly welded for structural integrity with mounting points reinforced by U-channel gussets.

### STANDARD FEATURES

**Two-Sided Steel Construction** – Utilizing American sourced steel that is expertly engineered to protect against work site conditions, Stahl truck bodies deliver the durability and strength to achieve the everyday performance demanded by the professionals across the industry.

**Worksite-Ready Powder Coat Finish** – Body exterior, compartment interiors, and cargo area surfaces are all finished in a corrosion resistant gloss white, polyester, TGIC powder coating and ready for work on day one.

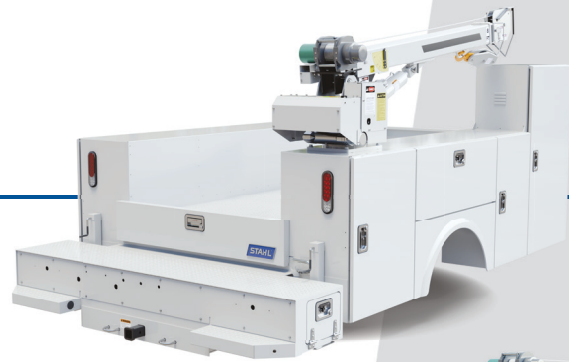
**Powder Coated Compartment Interiors** – powder coated compartments to protect against rust and corrosion caused by movement of tools and materials.

**Smooth Seamless Exterior Construction** – Flat sides and compartment tops allowing for easy branding and decals of great looking fleet trucks.

**Undercoating Protection** – Applied to the underside surfaces of the bottom of floor and wheel wells to protect against rust and corrosion caused by ground debris and moisture.

**Internal Compartment Door Hinges** – Concealed, bolt-on style hinges provide not only a clean appearance, but increase security and remove rust points that exist in competitive external designs.

**Professional T-Handle Rotation Latches** – Stahl designed stainless steel T-handle compression latches create a tight seal for all door panels to protect tools against the elements of both dust and moisture.



Depicted is the **CST98VVXS-3KLB**.



**Challenger Pro** representative photo of our crane body PRO frame style.

**Fully Recessed Tie-Down Rings** – Stahl's "d-ring" style tie-downs fully recess into the floor space to provide ample capacity for securing cargo without restricting load space as seen with other bodies in the industry.

**Oversized Compartment Storage** – Stahl provides the largest capacity tool storage in the industry. With pass-thru openings in intermediate panels between horizontal and all vertical compartments delivering full length storage, as well as bolt-in material trays and dividers, our bodies support the demand of material organization.

**Automotive Style Door Seal** – Stahl designed weather stripping seals tight against a flat surface for environmental protection, doubling as a drip edge for additional protection in compartments.

**Gas Shock Doors** – Stahl's gas cylinder style door supports smoothly operate to hold compartment doors in the fully open position and assist in closing.

**"Plug and Play" LED Rear Lighting with Wiring Harness** – Stahl's ultra bright end panel mounted 5-in-1 light kit allows for quick and easy installation, providing flexible light options for your work demands.

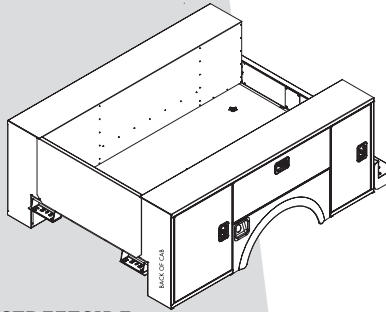
**Rugged Rear Tailgate** – Stahl's tailgate features a heavy-duty two-point "slam-lock" system featuring innovative anti-rack/rattle hardware securing your cargo in transport.

**Fender Panels** – Powder coat protected bolt-on die-stamped panels with radius wheel opening and fuel fill to allow for a universal fit across chassis types.

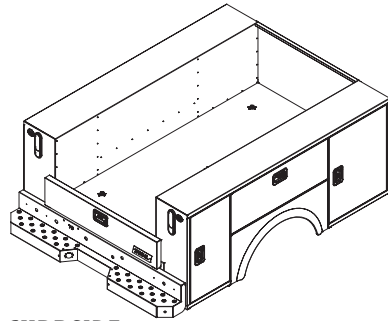
For Customer Service Call: 1.800.277.8245  
[stahltruckbodies.com/contact](http://stahltruckbodies.com/contact)

Continues on reverse side...

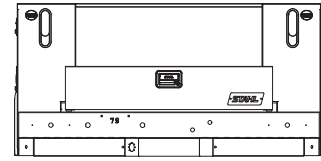
## Compartment Layout



**STREETSIDE**



**CURBSIDE**



**REAR VIEW**  
CHALLENGER PRO

## Dimensional Data

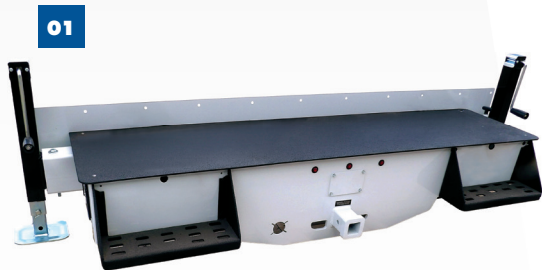
	98VVXS	110VVD	134VVD
Overall body length (less bumper)	98"	110"	134"
Loadspace floor width	46.5"	48.5"/52.5"	48.5"/52.5"
Overall body width	79.98"	92"/96"	92"/96"
Cab-to-axle requirement	56"	60"	84"
Front vertical width / Clear door opening	29.81" / 23.88"	33.44" / 28.94"	33.44" / 27.50"
Second vertical width / Clear door opening	N/A		24" / 19.81"
Horizontal width / Clear door opening	47.19" / 45.31"		
Rear vertical width / Clear door opening	21" / 15.25"	29.75" / 25.5"	29.75" / 24.06"
Vertical comp. height / Clear door opening	39.5" / 33.13"		
Horizontal comp. height / Clear door opening	18.07" / 13.19"		
Side compartment depth	13.84" SS / 15.84" CS	19.63"	19.63"
Floor to compartment top height	25.5"		
Tailgate height above floor / overall height	9.10" / 11.22"		

## Compartmental Tray Configurations

### Streetside ( Configurations )

COMPARTMENT	CURBSIDE COMPARTMENTATION	STREETSIDE COMPARTMENTATION
Front Vertical	(2) adjustable trays with dividers	(2) adjustable trays with dividers
Horizontal	(1) adjustable tray with dividers	Open
Rear Vertical	2KLB-4KLB Crane Reinforcement	(1) adjustable tray with dividers

For other models and dimensional data visit our website: [stahltruckbodies.com](http://stahltruckbodies.com)



Our Bolt-on Wrokbench Bumper (01) alongside a detailed view of the Structural Crane Reinforcement (02).



### STAHL

3201 W. Old Lincoln Way  
Wooster, OH 44691

P: 800.277.8245 F: 330.264.0300

[stahltruckbodies.com](http://stahltruckbodies.com)

**STAHL**<sup>®</sup>  
**TRUCK BODIES**

A Marmon Holdings / Berkshire Hathaway Company