

YOUR BEST CHOICE IN SERVICE TRUCK BODIES

6 DOOR BODY V-CONFIGURATION: Door Panel Replacement Worksheet

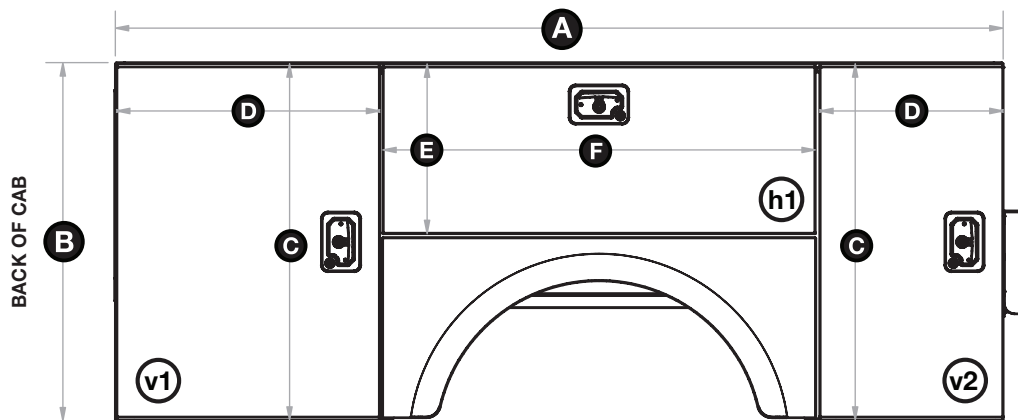
Dimensions need only be provided for doors being replaced.

Compartment doors for Stahl service bodies vary depending on the unit model and the year it was built.

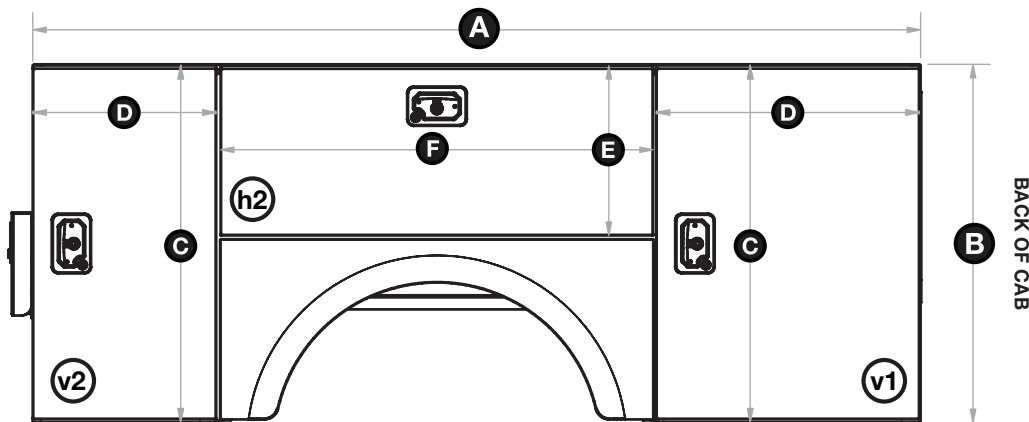
Body Serial Number : _____	Vertical Door (v1) Height (C): _____	Width (D): _____
Body Length (A) : _____	Vertical Door (v2) Height (C): _____	Width (D): _____
Body Height (B) : _____	Horizontal Door (h1) Height (E): _____	Width (F): _____
	Horizontal Door (h2) Height (E): _____	Width (F): _____

If your service body serial number starts with any of the following 3-digit prefixes, door measurements are not required, simply provide the complete body serial number. **Serial number prefixes not requiring door measurements: 412, 413, 414, 415, 416, 417, 418, 419, 420.**

CST - 6 DOOR V-CONFIGURATION DRIVER-SIDE



CST - 6 DOOR V-CONFIGURATION PASSENGER-SIDE



DOES YOUR REPLACEMENT DOOR(S) NEED TO BE PAINTED? YES NO

To receive a replacement door quotation, fill out this worksheet and submit it by email, fax, or fill the form out online at stahltruckbodies.com/parts/parts-replacement

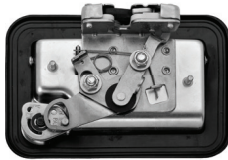
If you any questions contact your Local Distributor - stahltruckbodies.com/distributor-locator

stahltruckbodies.com

YOUR BEST CHOICE IN SERVICE TRUCK BODIES

DOOR LATCH IDENTIFICATION*

Use the images below to identify the correct latch type for your replacement door(s). Write your KEY CODE† in the box.

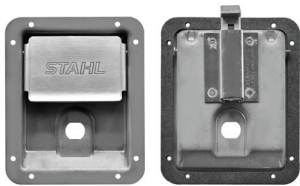


Latch Type 01

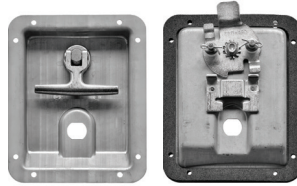


Latch Type 02

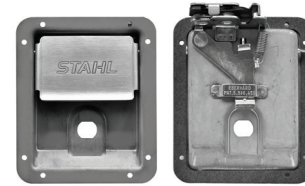
KEY CODE†:



Latch Type 03



Latch Type 04



Latch Type 05

INSTRUCTIONS FOR REFERENCE PHOTOS*



Wide angle shot of entire service body.



Exterior surface of door to be replaced including the face of the latch assembly.



Interior surface of door to be replaced including back side of the latch assembly and yellow sticker (serial number).



Exterior surface of door to be replaced including the face of the latch assembly.



From latch assembly include the lock cylinder and key code†.

* For a larger view of the suggested photos, photo tips, and larger view of latch identification (above) go here: stahltruckbodies.com/pr-tips

CONTACT INFORMATION

Please provide basic contact information to allow for worksheet to accompany form & materials submitted.

Full Name: _____

Company: _____

Phone Number: _____

Body Serial Number: _____

Email: _____

To receive a replacement door quotation, fill out this worksheet and submit it by email, fax, or fill the form out online at stahltruckbodies.com/parts/parts-replacement

If you any questions contact your Local Distributor - stahltruckbodies.com/distributor-locator

stahltruckbodies.com