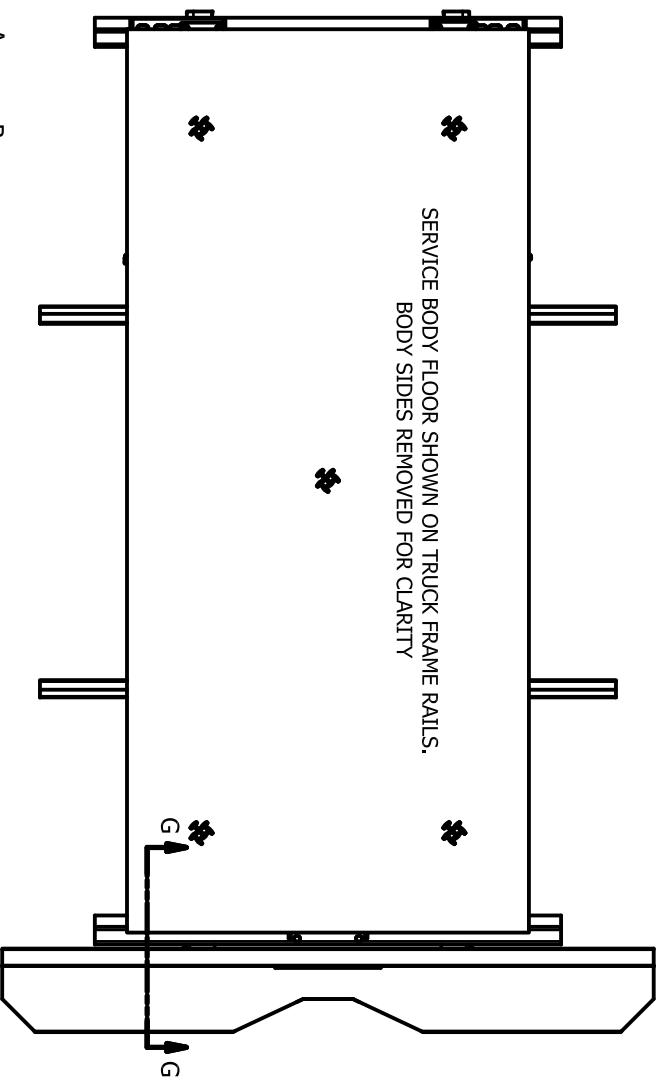
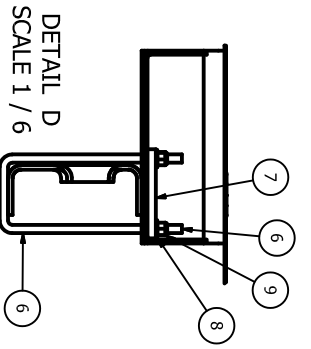
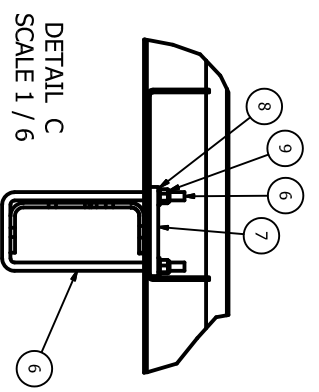
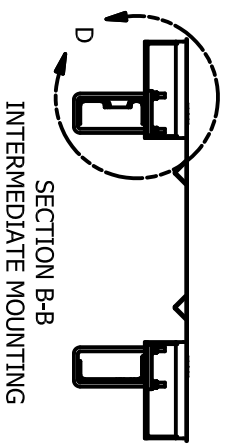
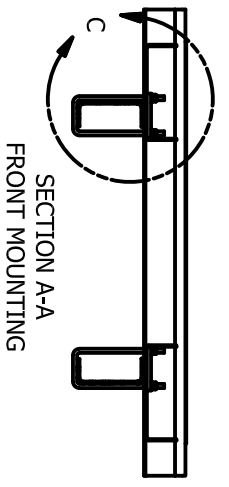
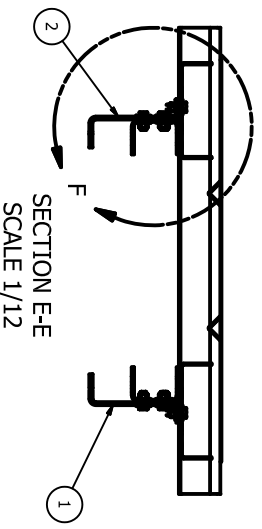
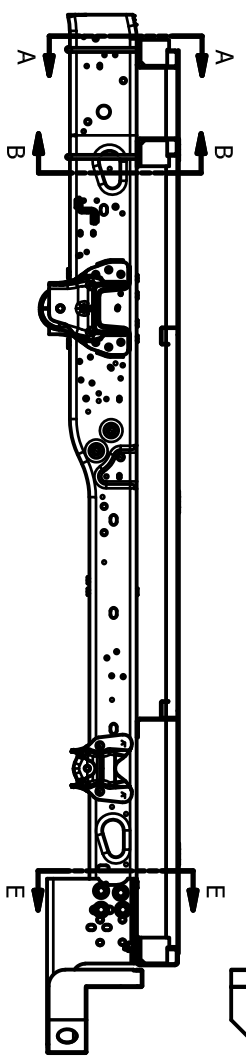
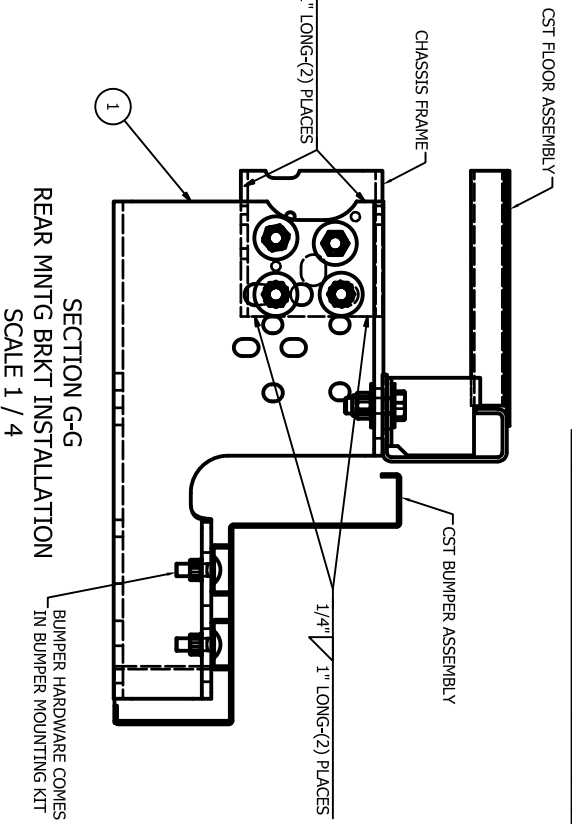


| LET | REVISIONS       | DATE | BY  | ECO |
|-----|-----------------|------|-----|-----|
| NC  | INITIAL RELEASE |      | XXX |     |



SERVICE FLOOR SHOWN ON TRUCK FRAME RAILS.  
BODY SIDES REMOVED FOR CLARITY



| ITEM | QTY | DNWG ID | PART NUMBER | DESCRIPTION                  |
|------|-----|---------|-------------|------------------------------|
| 1    | 1   | 4233    | 228821-01   | BRACKET-REAR MOUNTING-LH     |
| 2    | 1   | 4233    | 228821-02   | BRACKET-REAR MOUNTING-RH     |
| 3    | 8   | 9170    | 917516      | SCREW 5/8-11 X 1.75 GR 8 HHC |
| 4    | 20  | 9190    | 919880      | WASHER 5/8 FLAT              |
| 5    | 10  | 9190    | 919526      | NUT 5/8-11 NYLON LOCK GR 8   |
| 6    | 4   | 9330    | 216876      | U-BOLT-0.50\"/>              |

**TITLE**  
CST 110 INSTALLATION-16' FORD

**DATE**  
07-21-17

**SCALE**  
1=12

**DWG. I.D.**  
4233

**DRAWING NO.**  
209370-16F-60CA

**STAHLL**